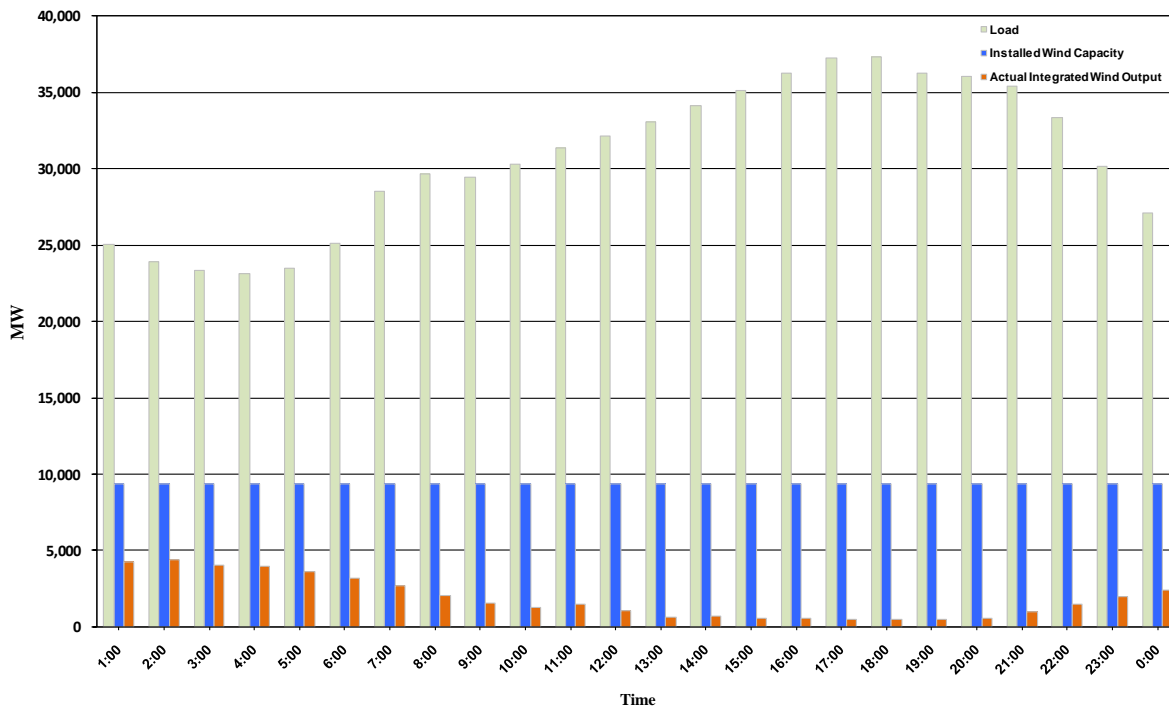




ERCOT Grid Operations Wind Integration Report: 10/06/10

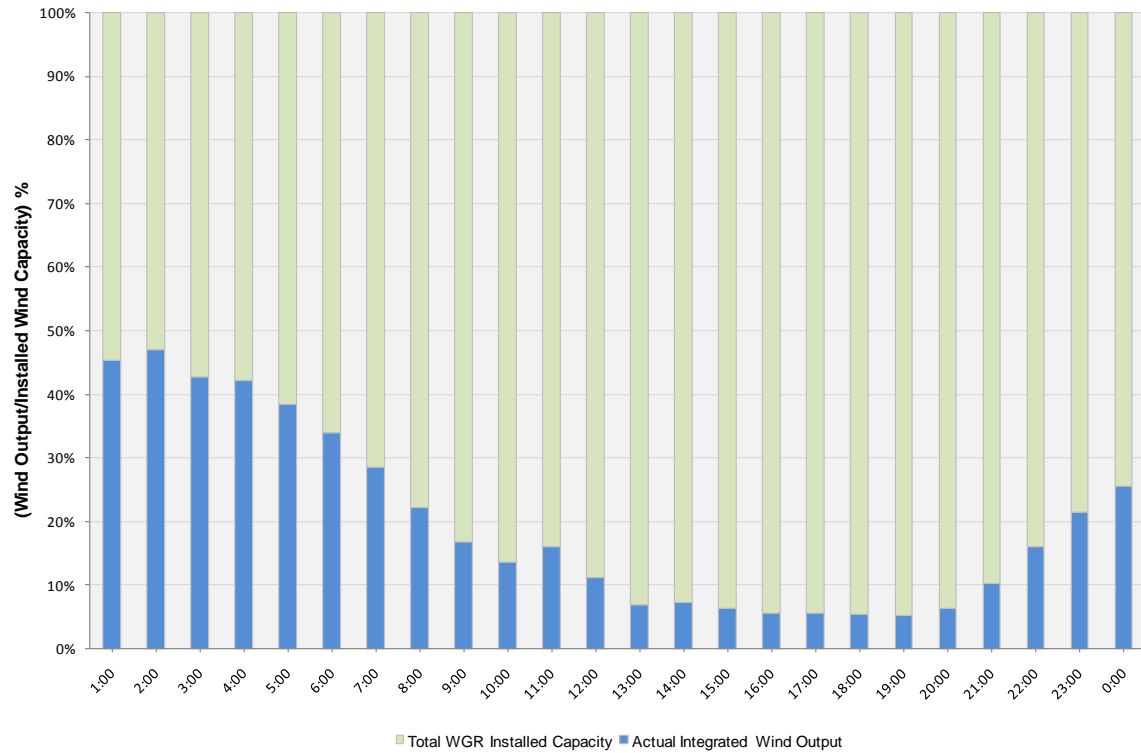
Peak Load	37,281 MW
Load Peak Hour	18
Wind Record 06/12/10	7016 MW
Max Wind value	4560 MW
Wind Peak Hour	01:11:44
Wind Integration %	18.91

Hourly Average Actual Load vs. Actual Wind Output
10-06-2010

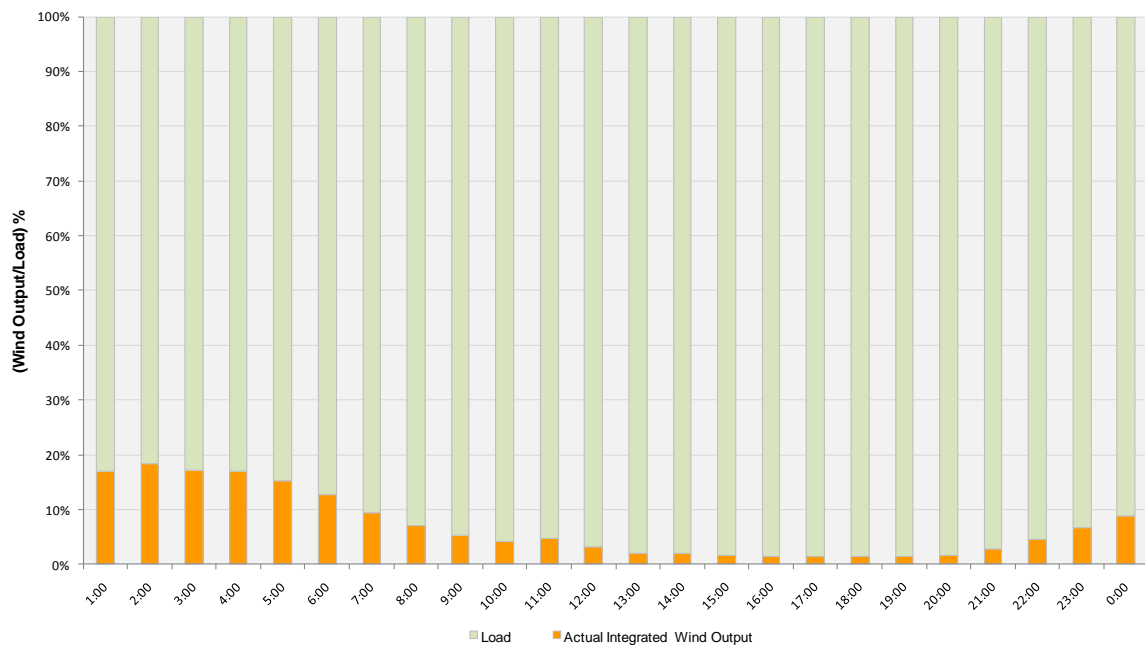




Actual Wind Output as a Percentage of the Total Installed Wind Capacity
10-06-2010



Actual Wind Output as a Percentage of the ERCOT Load
10-06-2010





ERCOT Load vs. Actual Wind Output 09/29/10 - 10/06/10

